

KOVROLIN.AZ

Hər Addımınızda Rahatlıq!

PARAS
PARAS



MEGA VELLUR

VENUS



Siyah Kırıl



Sis



Tünd Boz



Boz



302



909

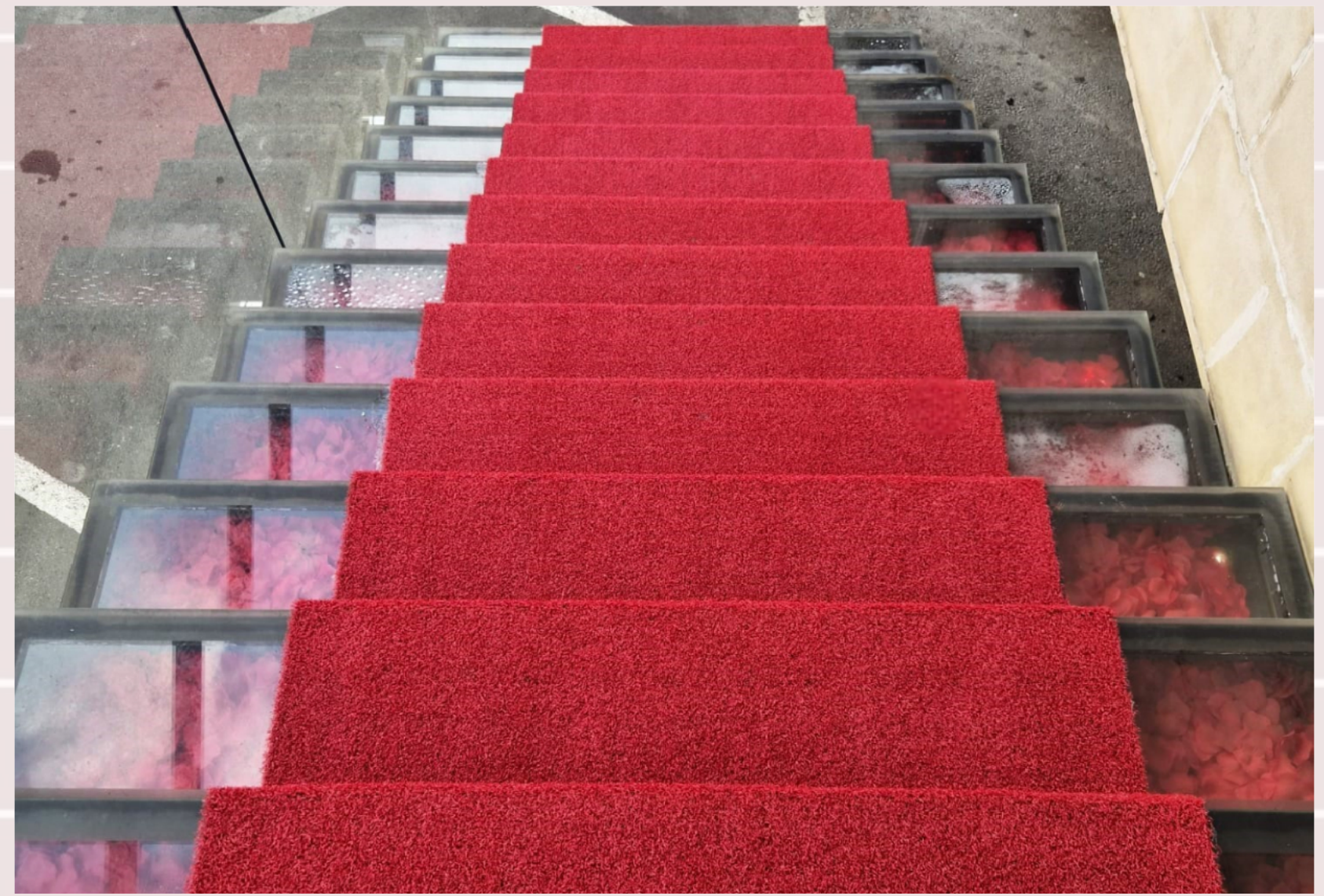
Name	Mega Vellur
Total Weight	650-700 g/m ²
Total Height	4 mm
Backing	Precoat
Pile Content	Polyester/Polipropilen
Size	2.2x25 m

Name	Venus
Total Weight	1600 g/m ²
Total Height	4.5 mm - 6 mm
Backing	Rubber base
Pile Content	100% Polipropilen
Size	2x25 m



BURSA FUAR

COCO



D. Grey



L. Grey



Green



Blue



Red

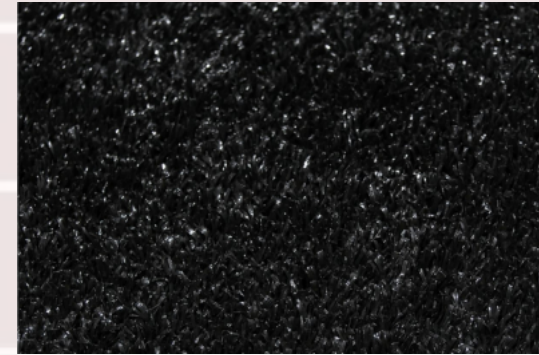


Grey



Brown

Name	Bursa Fuar
Total Weight	700 g/m ²
Total Height	3 mm
Primary Backing	100% PP
Size	2x50 m



Qara



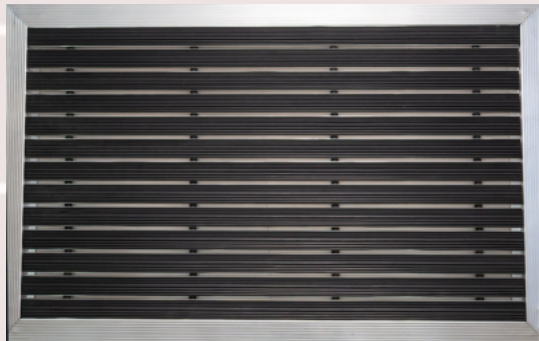
Qırmızı



Name	Coco
Total Weight	2800 g/m ²
Total Height	5 mm
Backing	Standart SBR Lateks / PU
Pile Content	ANTI-UV PE + PP
Size	4x25 m

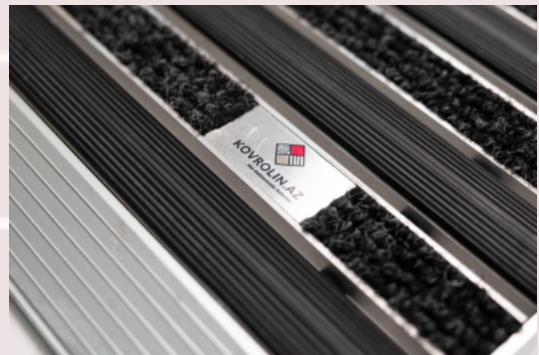


LOQOLU PASPAS ALUMINIUM



Mat

Loqolu Mat

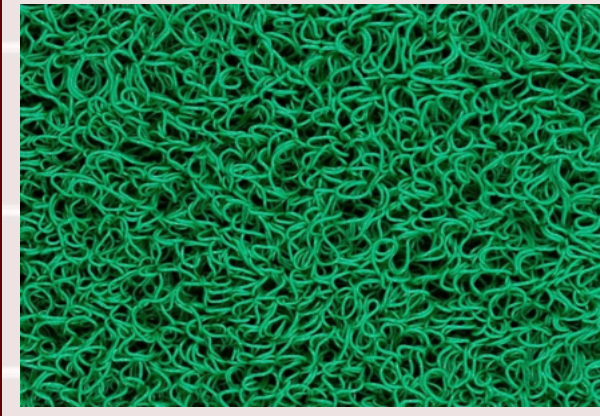


Sizin Logonuzla	Hər növ logo
İstənilən ölçüyə uyğun	Min. 0.60 sm
İstənilən rəng	Hər rəng
Keyfiyyətli və uzunömürlü	Sertifikatlı

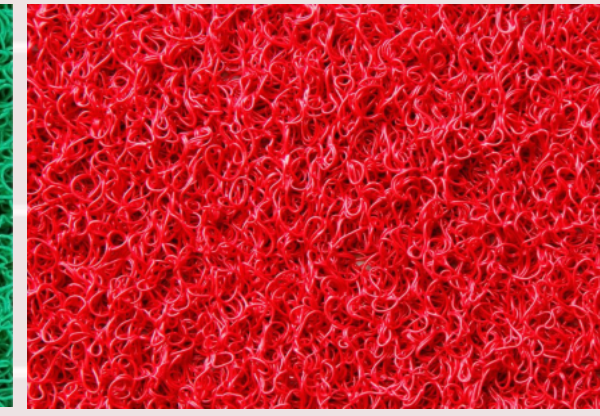
Name	Aluminium mat
Total Weight	11.3 kg/m ²
Total Height	20 mm
Sustainability	100% recycled aluminum. All inserts recyclable/re-usable 100% Econyl Fibre



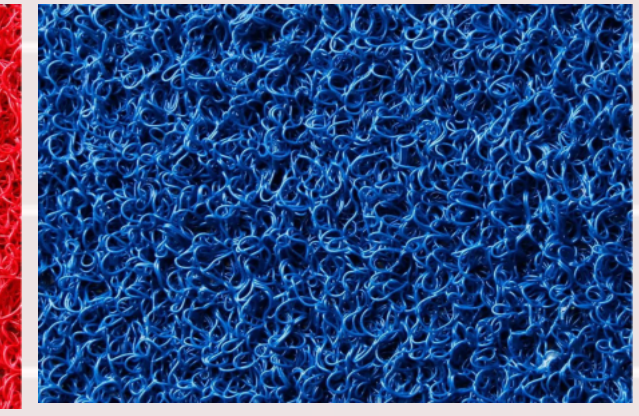
KIVIRCIK PASPAS



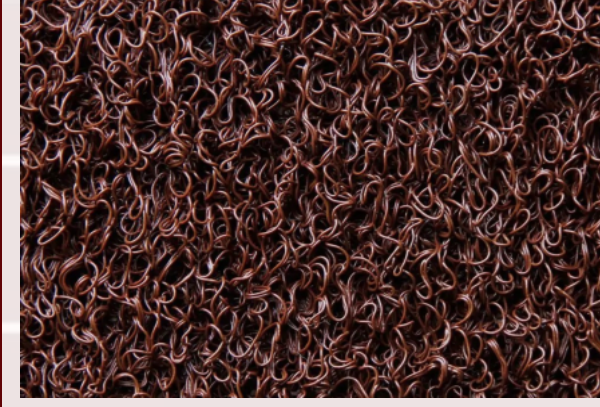
Yaşıl



Qırmızı



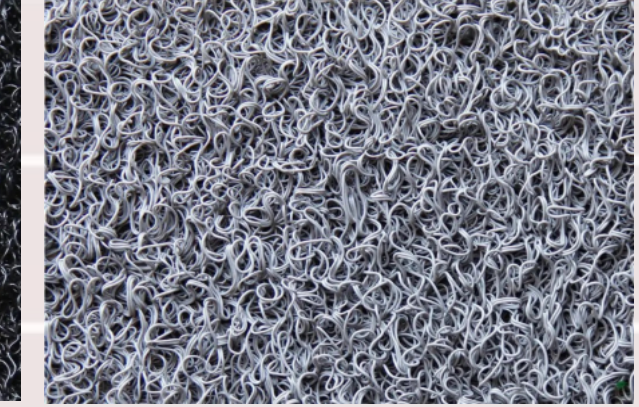
Göy



Qəhvəyi



Qara



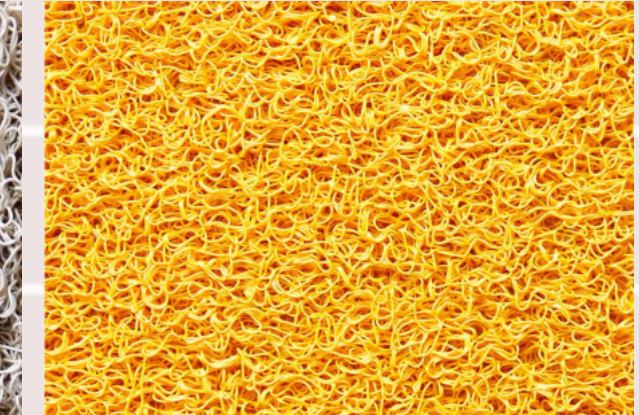
Boz



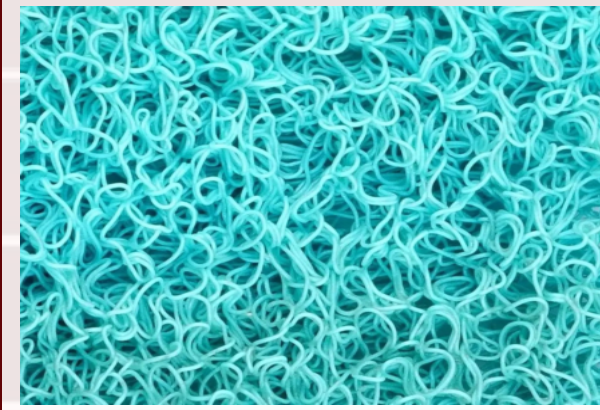
Narıncı



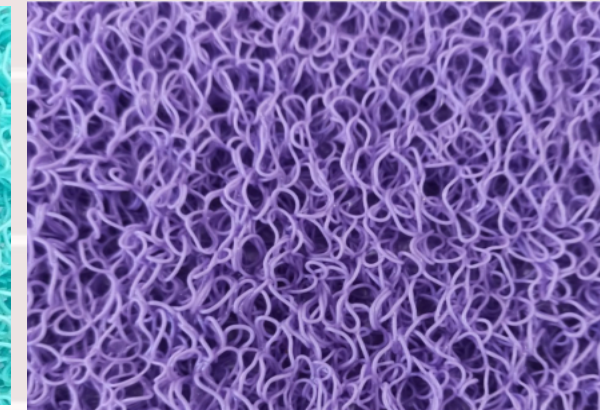
Bej



Sarı



Mavi

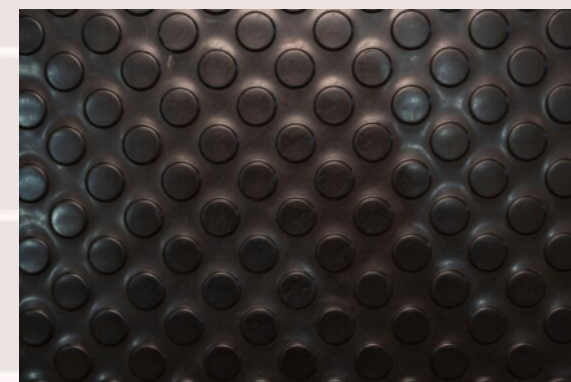


Bənövşəyi

Name	Kıvırcık Paspas
Total Weight	2600 g/m ²
Total Height	14 mm
Backing	Rubber
Pile Content	100% PVC
Size	1.2x12 m



PASPAS



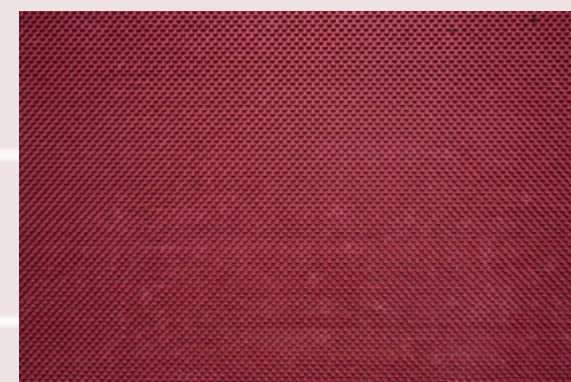
Pul Black



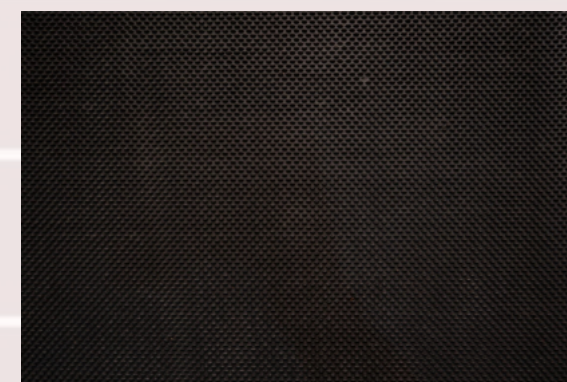
Pul Grey



Thorn Cream



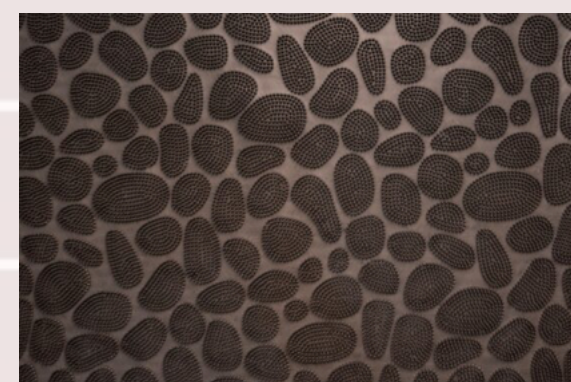
Thorn Red



Thorn Black



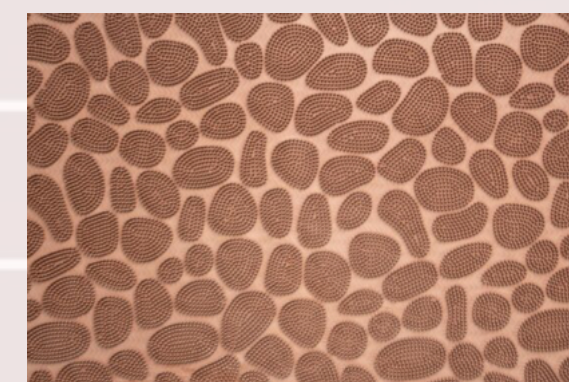
Thorn Grey



Stone Black



Stone Grey



Stone Cream

Name	Pul, Stone, Thorn
Total Weight	2.81 kg/m ²
Total Height	2.2 mm
Backing	Rubber
Pile Content	Polivinil Xlorid
Size	1.2x12, 2x20 m



[kovrolin_az](#)



[kovrolin.az](#)



[kovrolinazerbaijan5468](#)



[kovrolin.az](#)



[kovrolin-azerbaijan](#)

www.kovrolin.az
info@kovrolin.az
+99450 503 99 88

Ceyhun Hacıbəyli 61H
Bakı, Azərbaycan

SINCE 2012

by **AYFA**
group